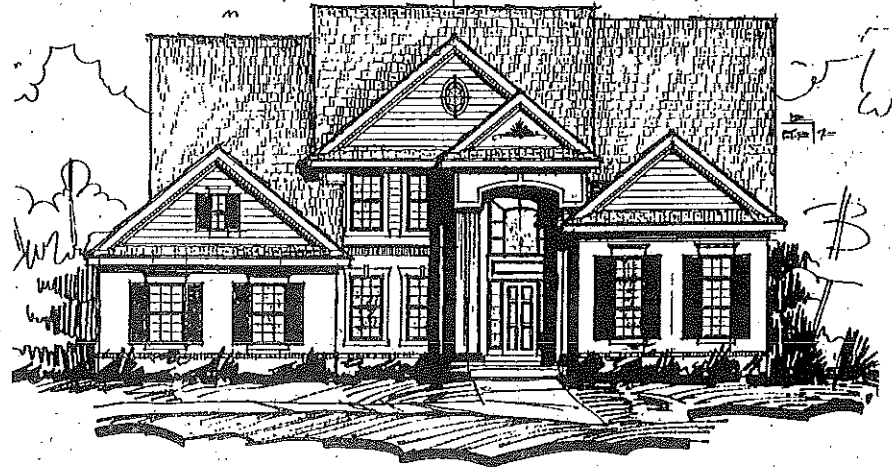
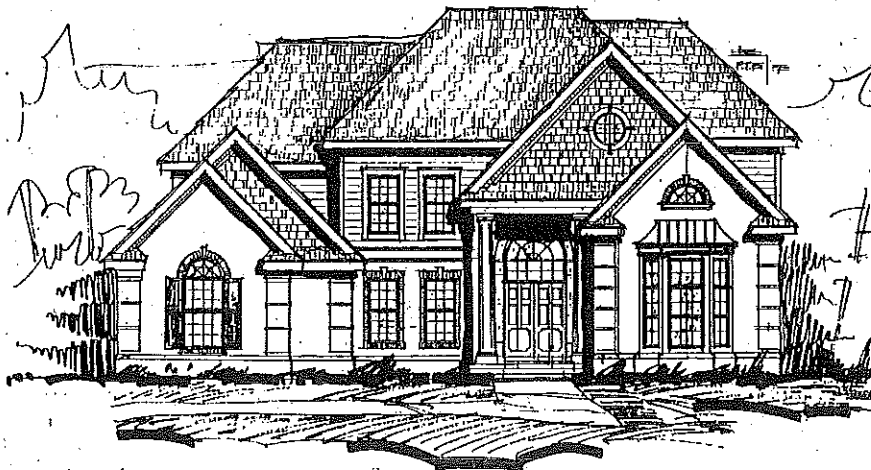


THE EMERSON



Elevation A

Neoclassicism finds expression in this elevation which features an arched two-story entry with classic columns and true-divided glass window, varied gables with ornamentation and projected brick window treatments.



Elevation B

Brick softened with cedar shake accents lends distinction to Neoclassicism. Quoin corners and brick window treatment plus a metal-roofed bay window complete the traditional theme.



Elevation C

A brick exterior presents a commanding street presence for this Georgian elevation. Classic features include stone window detailing, an elegant Palladian window and a gracious entry portico with a fluted column and an arched window.

THE EMERSON

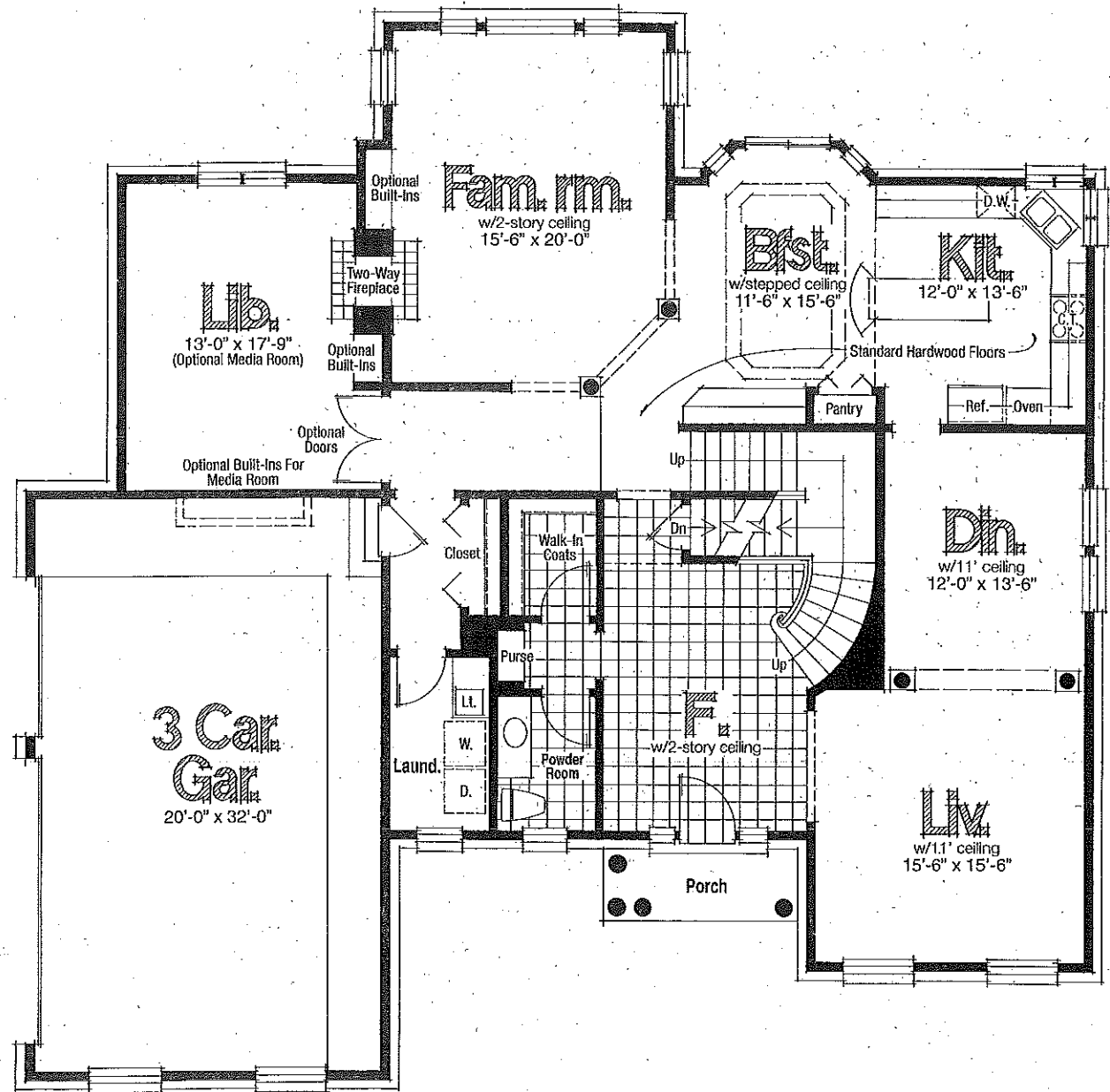
Bedrooms: 4

Baths: 3 1/2

Square Footage: 3,750

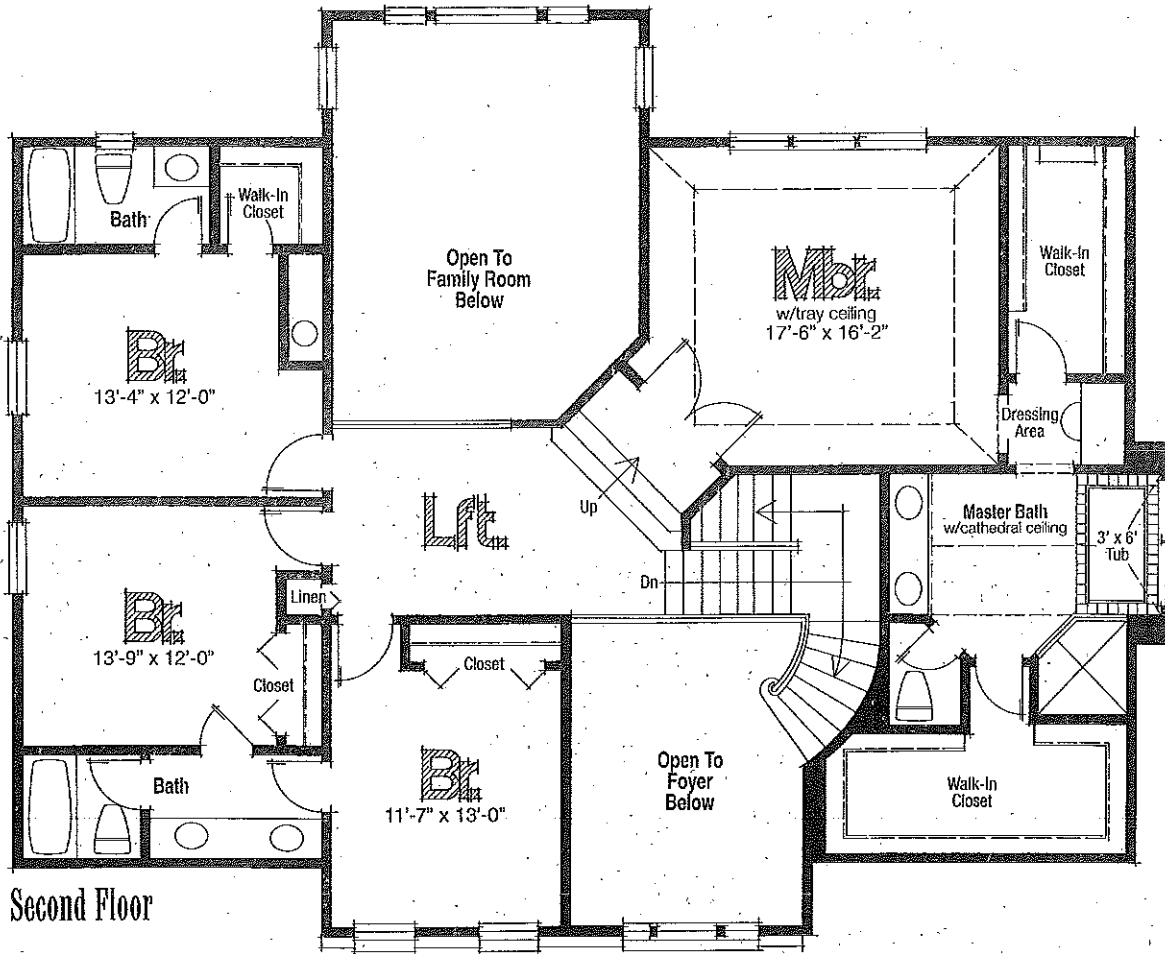
A generously scaled two-story foyer with a sweeping Y-shaped staircase initiates the elegant style that prevails throughout this home. A view of the classic columns gracing informal space reveals the perfect family retreat that awaits in the rear of the house. Here, a two-story family room with expansive windows shares the warmth of a two-way fireplace with a spacious library. An interesting stepped ceiling enhances the large breakfast nook, sun-filled from a bay window. The kitchen wraps around a central preparation island enlarged for relaxed dining. The Emerson also has formal living and dining rooms distinguished by columns and an elegant powder room with a mirrored vestibule.

Designed with luxury in mind, the private, step-up master suite has a tray ceiling in the bedroom area, a cathedral ceiling in the bath and a dramatic cantilevered whirlpool tub.



First Floor

below and may serve as a computer/entertainment loft.



Second Floor

The renderings are the artist's conception. Floor plans are intended to serve as a general guide, not to accurately depict the legal description of the property's walls, boundaries, dimensions, scale of rooms or their relative locations. We cannot provide any warranties or representations that the actual and depicted description will not differ. Features subject to change without notice.

